

## EXTERNAL PRE-FILTER REPLACEMENT GUIDE

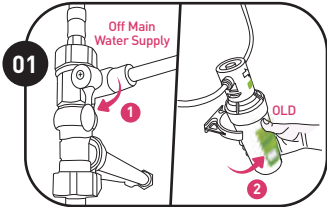
### FOR ALL NOVITA WATER PURIFICATION UNITS

#### 12 MONTHS / 3,600 LITRES\* FILTER REPLACEMENT

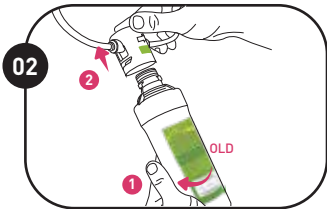
For optimum performance, it is recommended to replace the external pre-filter once every twelve (12) months/3,600\* litres of water from initial usage, whichever comes first.

\* Based on average ten (10) litres a day usage.

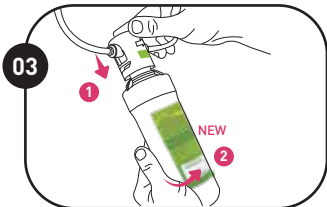
• It is strongly recommended to replace the external pre-filter according to its recommended usage for hygiene purposes and optimum performance.



Turn off the main water supply. Lift up the base of the external pre-filter and pull it outwards to remove it from the holder.

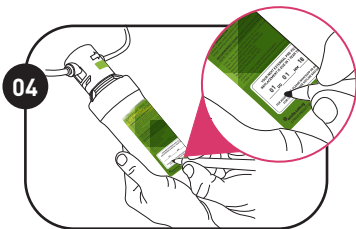


Remove the exhausted external pre-filter from the filter head connector by rotating it in an anticlockwise direction. Discard the exhausted external pre-filter.

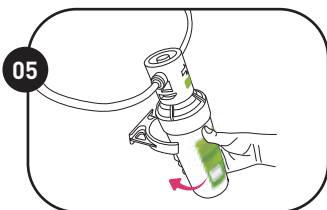


Remove the plastic packaging and filter cap on the new external pre-filter. Insert the new external pre-filter into the filter head connector and rotate it in a clockwise direction to tighten it.

⚡ • Ensure the external pre-filter and filter head connector are fitted snugly and properly assembled before usage.

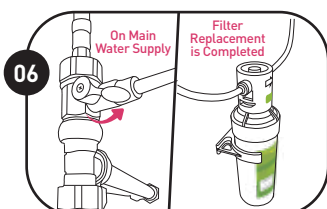


Indicate the external pre-filter replacement due date in one (1) year time on the filter label and take note of the filter replacement due date.



Hold onto the external pre-filter and insert it into the holder at a tilted angle.

⚡ • Be careful not to injure your hand while inserting the external pre-filter into the holder.



Turn on the main water supply. The external pre-filter replacement is completed.