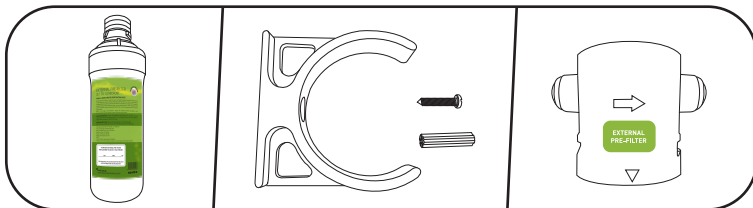


EXTERNAL PRE-FILTER INSTALLATION GUIDE FOR ALL NOVITA WATER PURIFICATION UNITS

STANDARD INSTALLATION ACCESSORIES



1 x External Pre-Filter

1 x Holder Set

1 x Filter Head Connector

• Filter Cartridge Holder and Filter Head Connector are sold separately.

EXTERNAL PRE-FILTER STANDARD INSTALLATION PROCEDURE

The external pre-filter must be installed right before the water purification unit to filter out larger sediment/dirt deposited from the water piping, for longer lasting and optimum unit's filter performance.

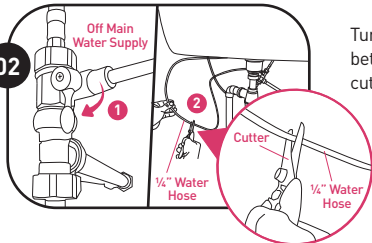
01



Remove the plastic packaging and filter cap on the external pre-filter.

• Filter Cartridge Holder and Filter Head Connector are sold separately.

02



Turn off the main water supply. Measure a suitable 1/4" water hose distance between unit and main water supply for the external pre-filter, then use a cutter to trim the water hose to length.

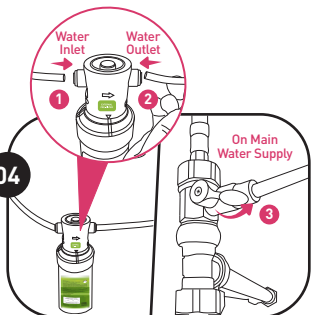
03



Insert the external pre-filter into the filter head connector and rotate it in a clockwise direction to tighten it.

• Ensure the external pre-filter and filter head connector are fitted snugly and properly assembled before usage.

04

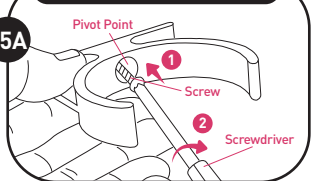


Follow the flow direction on the external pre-filter head connector to insert the water inlet and outlet hose into the left and right hand side of the filter head connector respectively and ensure they are fitted snugly. Turn on the main water supply.

• Please take note of the flow direction indicated on the external pre-filter head connector.

Install Holder Against Wood Material

05A

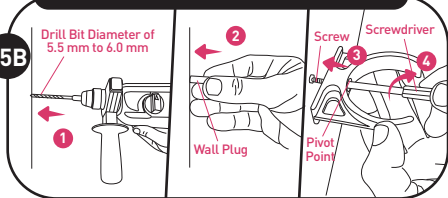


Option A To Install The Holder Against Wood Material

Locate a desired position to install the holder. Align and turn in the screw through the pivot point of the external pre-filter holder until the screw's thread engages with the wood materials. Ensure the holder is installed snugly.

Install Holder Against Cement Material

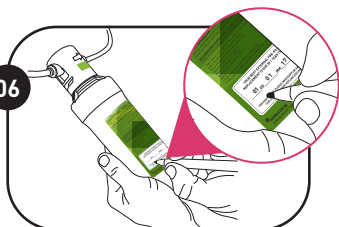
05B



Option B To Install The Holder Against Cement Material

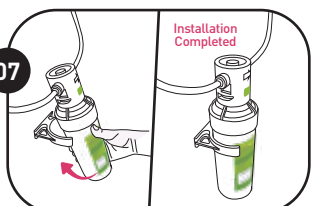
Locate a desired position to install the holder. Drill a pilot hole through the cement material with a drill bit diameter of 5.5 mm to 6.0 mm. Insert wall plug into the pilot hole. Turn in the screw through the pivot point of the external pre-filter holder into the wall plug. Ensure the holder is installed snugly.

06



Indicate the external pre-filter replacement due date in one (1) year time on the filter label and take note of the filter replacement due date.

07



Hold onto the external pre-filter and insert it into the holder at a tilted angle. The external pre-filter installation is completed.

• Be careful not to injure your hand while inserting the external pre-filter into the holder.